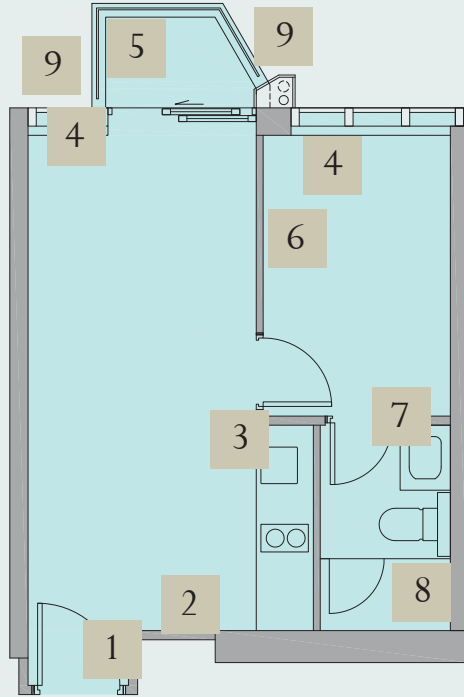


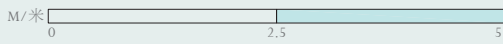
O A S I S
K A I T A K

Unit E, 28/F, Tower 3 (Unmodified Show Flat)
第 3 座 28 樓 E 室 (無改動示範單位)

Location of Notices 告示位置



Scale比例



Notice 1 告示 1

This show flat is for showing the residential property concerned only and does not constitute and shall not be construed as constituting any representation or warranty in respect of the view from any residential property in the Development or the external appearance of any part of the Development, whether or not the external finishes, external pipes, or appearance of any part of the Development have been shown.

本示範單位僅作展示相關住宅物業之用，並不構成亦不得詮釋為任何關於發展項目任何住宅物業景觀或發展項目任何部份之外觀之陳述或保證，不論是否可能有展示發展項目任何部份之外牆裝修物料、外在喉管或外觀。

O A S I S
K A I T A K

There is slight difference in dimensions of this show flat and of (if any) the bay window, utility platform and balcony from those as specified in the sales brochure, and the difference is due to the finishes on the enclosing walls or boundary walls or internal partitions of the unmodified show flat.

由於此示範單位的圍封牆或邊界牆或內部間格的裝修物料所致，此示範單位及(如有)其窗台、工作平台及露台的尺寸與售樓說明書所指明的尺寸略有分別。

O A S I S
K A I T A K

This Home Automation Pad of home automation system is an appliance to be provided to residential properties to control the on/off of lighting and split type air-conditioner of the living room and dining room. Please refer to the sales brochure for details of fittings, finishes and appliances to be provided in residential properties.

此智能家居系統之家居智能控制器為將於住宅物業提供的設備，可控制客廳及飯廳的燈光及分體式空調機開關。有關將於住宅物業提供的裝置、裝修物料及設備之詳情，請參閱售樓說明書。

Note:

The vendor reserves the right to substitute any fittings, finishes and appliances with other fittings, finishes and appliances in accordance with the provisions of the agreement for sale and purchase.

附註：

賣方保留權利按買賣合約條款以其他裝置、裝修物料及設備代替任何裝置、裝修物料及設備。

O A S I S
K A I T A K

The air grilles, sprinklers, visual advisory alarms, emergency lighting, exit signs, speakers and features marked with green dots “●” in this show flat are the in-situ built-in facilities of this venue. There are no such facilities in the residential properties of the Development and it may not be possible to install such facilities in the actual property. For fittings, finishes and appliances of the residential properties in the Development, please refer to the sales brochure.

本示範單位內有綠色圓點“●”標示之通風格柵、消防花灑頭、視像警報器、應急照明燈、出路指示牌、擴音器及其他裝置是為本場地現場固有的配套設施。發展項目之住宅物業並沒有此等設施，亦未必可能裝設此等設施。有關發展項目之住宅物業的裝置、裝修物料及設備，請參閱售樓說明書。

O A S I S
K A I T A K

Exposed pipes will be hidden by the false ceiling in the actual unit. Those exposed pipes have not been provided in this show flat.

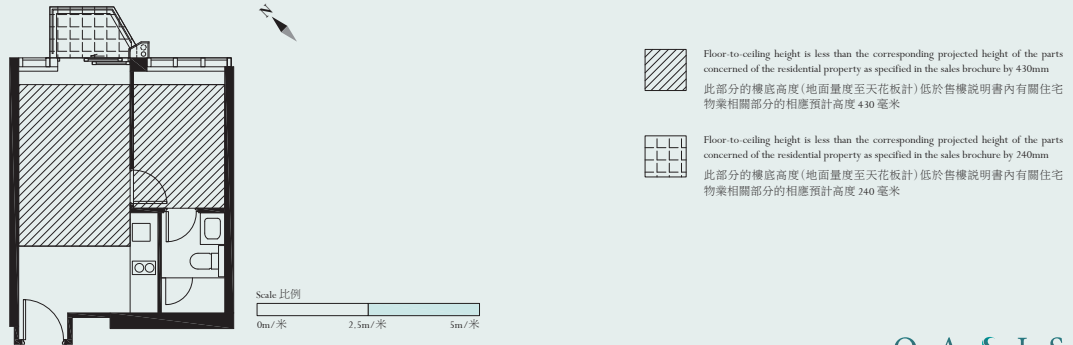
實際單位內之外露喉管將被假天花隱藏。該等外露喉管在此示範單位內並無提供。

O A S I S
K A I T A K

The floor-to-ceiling height of different parts of this show flat is less than the corresponding projected height of the parts concerned of the residential property as specified in the sales brochure by the relevant difference as set out in the plan below due to physical constraints of the venue. Due to the finishes on the floor and ceiling of this show flat, it is possible that there will be a difference between the floor-to-ceiling height of the show flat obtained by taking measurements inside the show flat (it will not be able to take into account of the thickness of the aforesaid finishes when taking such measurements) and the projected height (less the aforesaid height difference) of the corresponding residential property.

此示範單位不同部分的樓底高度(地面量度至天花板計)，低於售樓說明書內有關住宅物業相關部分的相應預計高度(差距見下圖)，原因是現場環境所限。因示範單位地板及天花板均有裝修物料，於示範單位內量度出之樓底高度(地面量度至天花板計)(如此量度得出之樓底高度未能將上述裝修物料厚度納入計算之中)可能會與有關住宅物業減去上述高度差距後的相應預計高度不同。

Please see the below ceiling plan for the extent of lower ceiling height area.
有關較低天花高度之範圍，請參閱下圖。



O A S I S
K A I T A K

The outdoor units of the split type air-conditioners of Unit E on 28/F, Tower 3 will be installed on the A/C platform of the unit, which forms part of the common area of the Development. Due to physical constraint of the venue, such A/C platform and outdoor units of the split type air-conditioners are not provided in this show flat. For details and location of the A/C platform and the fittings, finishes and appliances, please refer to the sales brochure.

第3座28樓E單位的分體式空調機的室外機裝置於空調機平台。該空調機平台為發展項目的公用地方。由於現場環境所限，本示範單位並沒有展示該空調機平台及分體式空調機的室外機。有關空調機平台及裝置、裝修物料及設備的資料及位置，請參閱售樓說明書。

O A S I S
K A I T A K

Notice 2 告示 2

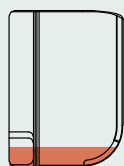
As the floor-to-ceiling height of this show flat is less than the corresponding projected height of the actual unit, due to the physical constraint of the venue, the air-conditioner shown in this show flat is installed in such a position which is approximately 130mm lower than the position in which the air-conditioner will be installed in the actual unit.

The size of the air-conditioner in this unmodified show flat does not represent the size of the air-conditioner provided in the unit. The upper part of the air-conditioner shown in this unmodified show flat is covered by the ceiling. As the floor-to-ceiling height of this unmodified show flat is 430mm less than the corresponding projected height of the unit, the upper part of the air-conditioner shown in this unmodified show flat is covered by the ceiling by 240mm. The height of the air-conditioner provided in the unit is 290mm. Please refer to the sectional plan and the photograph below showing the height of the air-conditioner of the unit. Visible portion of the air-conditioner of this unmodified show flat is shown in pink.

由於此示範單位樓面至天花高度比實際單位的相應預計高度少，因現場環境所限，本示範單位的空調機安裝之位置比實際單位空調機安裝之位置低 130 毫米。

此無改動示範單位空調機並不反映單位提供的空調機大小，無改動示範單位所展示空調機上部分由天花所覆蓋。由於無改動示範單位樓面至天花高度比有關單位的相應預計高度少 430 毫米，無改動示範單位展示空調機上部分被天花覆蓋 240 毫米。單位提供的空調機高度為 290 毫米。單位提供的空調機請參閱下述截面圖及相片。此無改動示範單位之空調機可見部分由粉紅色標示。

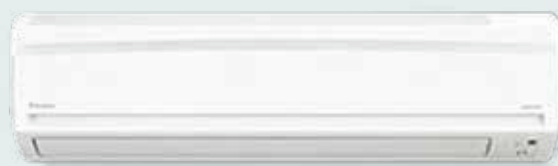
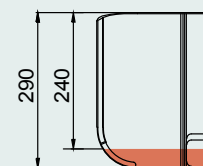
Side View
側面圖



Front View
前視圖



Side View
側面圖



Photograph shown for illustration only.
此圖片僅供參考。

O A S I S
K A I T A K

The floor-to-floor height of the living room and dining room of the actual unit:

3150mm

Due to physical constraints of the venue, the floor-to-ceiling height of the living room and dining room (or part(s) thereof, if applicable) (the “Area Concerned”) of this show flat is less than the corresponding projected height of the Area Concerned of the residential property as specified in the sales brochure by approximately:

430mm

(remark: please refer to the relevant notice at the entrance of this show flat for details)

實際單位的客廳及飯廳的層與層之間的高度：

3150毫米

因現場環境所限，此示範單位的客廳及飯廳（或其部分（如適用））（「相關範圍」）之樓底高度（地面量度至天花板計），低於售樓說明書內有關住宅物業的相關範圍之相應預計高度約：

430毫米

（註：詳情請參閱本示範單位入口之相關告示）

There will be a wireless router (for Home Automation System) inside the false ceiling or bulkhead here in the actual unit. Such wireless router has not been provided in this show flat.

實際單位此處之假天花或假陣內將有無線路由器（用於家居智能系統）。該無線路由器在此示範單位內並無提供。

O A S I S
K A I T A K

Notice 3 告示 3

Ventilation fan will be hidden by the false ceiling in the kitchen in the actual unit. The ventilation fan has not been provided in this show flat.

實際單位廚房內之抽氣扇將被假天花隱藏。該抽氣扇在此示範單位內並無提供。

O A S I S
K A I T A K

There will be conduits and/or mechanical and electrical provisions inside the false ceiling here in the actual unit. Such conduits and/or mechanical and electrical provisions are not provided in this show flat.

實際單位此處之假天花內將有喉管及/或機電設備。該等喉管及/或機電設備在此示範單位中並無提供。

O A S I S
K A I T A K

There will be pipes inside this cabinet in the kitchen of the actual unit. Those pipes have not been installed in this show flat/there could be differences in number, size, location, alignment, etc. between those pipes installed in this show flat and those pipes installed in the actual unit. There will be openings in different partitions of this cabinet in the actual unit for the installation of pipes. Such openings are not provided in this show flat.

實際單位此廚櫃內將有喉管。該等喉管在此示範單位內並無安裝或此示範單位內之該等喉管與實際單位之該等喉管在數目、尺寸、位置、路線等可能有分別。實際單位之廚櫃內之不同間隔板將有開口位安裝喉管。該等開口位在此示範單位內並無提供。

O A S I S
K A I T A K

Unit E, 28/F, Tower 3 – Open Kitchen Appliances 第 3 座 28 樓 E 單位 – 開放式廚房設備

Appliances to be provided or installed in the Open Kitchens of Unit E on 3/F, 5-12/F, 15-23/F & 25-33/F, Tower 3
第 3 座 3 樓、5 至 12 樓、15 至 23 樓及 25 至 33 樓之 E 單位之開放式廚房均配備或安裝以下設備

Appliance	設備	Brand 品牌
Duct Type Ventilaton Fan	風喉式抽氣扇	Gelec
Cooker Hood	抽油煙機	Siemens 西門子
Induction Hob	電磁煮食爐	Siemens 西門子
Microwave Oven with Grill	微波燒烤爐	Siemens 西門子
Fridge-Freezer	雪櫃連冰箱	Siemens 西門子
Washer Dryer	洗衣乾衣機	Siemens 西門子
Electric Water Heater	電熱水爐	Stiebel Eltron 斯寶亞創

Note: The vendor reserves the right to substitute any fittings, finishes and appliances with other fittings, finishes and appliances in accordance with the provisions of the agreement for sale and purchase.

附註：賣方保留權利按買賣合約條款以其他裝置、裝修物料及設備代替任何裝置、裝修物料及設備。

Notice 4 告示 4

This show flat is for showing the residential property concerned only and does not constitute and shall not be construed as constituting any representation or warranty in respect of the view from any residential property in the Development or the external appearance of any part of the Development, whether or not the external finishes, external pipes, or appearance of any part of the Development have been shown.

本示範單位僅作展示相關住宅物業之用，並不構成亦不得詮釋為任何關於發展項目任何住宅物業景觀或發展項目任何部份之外觀之陳述或保證，不論是否可能有展示發展項目任何部份之外牆裝修物料、外在喉管或外觀。

O A S I S
K A I T A K

Notice 5 告示 5

The railing and floor and wall finishes of this balcony are standard provisions upon handover. The balcony is a non-enclosed area and no alteration and addition shall be made or allowed.

此露台之圍欄、地台及牆身為交樓標準。露台為不可封閉之地方，任何人不得對其作出任何改動或加建。

O A S I S
K A I T A K

The floor-to-floor height of the balcony of the actual unit:

3150mm

Due to physical constraints of the venue, the floor-to-ceiling height of the balcony (or part(s) thereof, if applicable) (the “Area Concerned”) of this show flat is less than the corresponding projected height of the Area Concerned of the residential property as specified in the sales brochure by approximately:

240mm

(remark: please refer to the relevant notice at the entrance of this show flat for details)

實際單位的露台的層與層之間的高度：

3150毫米

因現場環境所限，此示範單位的露台（或其部分（如適用））（「相關範圍」）之樓底高度（地面量度至天花板計），低於售樓說明書內有關住宅物業的相關範圍之相應預計高度約：

240毫米

（註：詳情請參閱本示範單位入口之相關告示）

Notice 6 告示 6

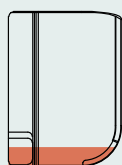
As the floor-to-ceiling height of this show flat is less than the corresponding projected height of the actual unit, due to the physical constraint of the venue, the air-conditioner shown in this show flat is installed in such a position which is approximately 130mm lower than the position in which the air-conditioner will be installed in the actual unit.

The size of the air-conditioner in this unmodified show flat does not represent the size of the air-conditioner provided in the unit. The upper part of the air-conditioner shown in this unmodified show flat is covered by the ceiling. As the floor-to-ceiling height of this unmodified show flat is 430mm less than the corresponding projected height of the unit, the upper part of the air-conditioner shown in this unmodified show flat is covered by the ceiling by 233mm. The height of the air-conditioner provided in the unit is 283mm. Please refer to the sectional plan and the photograph below showing the height of the air-conditioner of the unit. Visible portion of the air-conditioner of this unmodified show flat is shown in pink.

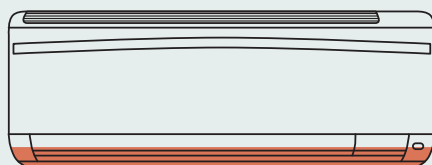
由於此示範單位樓面至天花高度比實際單位的相應預計高度少，因現場環境所限，本示範單位的空調機安裝之位置比實際單位空調機安裝之位置低 130 毫米。

此無改動示範單位空調機並不反映單位提供的空調機大小，無改動示範單位所展示空調機上部分由天花所覆蓋。由於無改動示範單位樓面至天花高度比有關單位的相應預計高度少 430 毫米，無改動示範單位展示空調機上部分被天花覆蓋 233 毫米。單位提供的空調機高度為 283 毫米。單位提供的空調機請參閱下述截面圖及相片。此無改動示範單位之空調機可視部分由粉紅色標示。

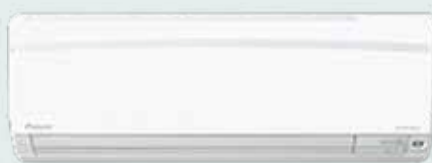
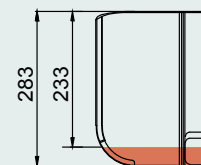
Side View
側面圖



Front View
前視圖



Side View
側面圖



Photograph shown for illustration only.
此圖片僅供參考。

The floor-to-floor height of the bedroom of the actual unit:

3150mm

Due to physical constraints of the venue, the floor-to-ceiling height of the bedroom (or part(s) thereof, if applicable) (the “Area Concerned”) of this show flat is less than the corresponding projected height of the Area Concerned of the residential property as specified in the sales brochure by approximately:

430mm

(remark: please refer to the relevant notice at the entrance of this show flat for details)

實際單位的睡房的層與層之間的高度：

3150毫米

因現場環境所限，此示範單位的睡房（或其部分（如適用））（「相關範圍」）之樓底高度（地面量度至天花板計），低於售樓說明書內有關住宅物業的相關範圍之相應預計高度約：

430毫米

（註：詳情請參閱本示範單位入口之相關告示）

Notice 7 告示 7

Ventilation fan will be hidden by the false ceiling in the bathroom in the actual unit. The ventilation fan has not been provided in this show flat.

實際單位此浴室內之抽氣扇將被假天花隱藏。該抽氣扇在此示範單位內並無提供。

O A S I S
K A I T A K

There will be conduits and/or mechanical and electrical provisions inside the false ceiling here in the actual unit. Such conduits and/or mechanical and electrical provisions are not provided in this show flat.

實際單位此處之假天花內將有喉管及/或機電設備。該等喉管及/或機電設備在此示範單位中並無提供。

O A S I S
K A I T A K

There will be pipes inside this cabinet in the bathroom of the actual unit. Those pipes have not been installed in this show flat/there could be differences in number, size, location, alignment, etc. between those pipes installed in this show flat and those pipes in the actual unit. There will be openings in different partitions of this cabinet in the actual unit for the installation of the pipes. Such openings are not provided in this show flat.

實際單位此浴室之櫃內將有喉管。該等喉管在此示範單位內並無安裝/此示範單位內之該等喉管與實際單位之該等喉管在數目、尺寸、位置、路線等可能有分別。實際單位之此櫃內之不同間隔板將有開口位安裝喉管。該等開口位在此示範單位內並無提供。

O A S I S
K A I T A K

Unit E, 28/F, Tower 3 – Bathroom Appliances 第 3 座 28 樓 E 單位 – 浴室設備

Appliances to be provided or installed in the Bathrooms of Unit E on 3/F, 5-12/F, 15-23/F & 25-33/F, Tower 3
第 3 座 3 樓、5 至 12 樓、15 至 23 樓及 25 至 33 樓之 E 單位之浴室均配備或安裝以下設備

Appliance	設備	Brand 品牌
Thermo Ventilator	浴室寶	Panasonic
Duct Type Ventilation Fan	風喉式抽氣扇	Ostberg

Note: The vendor reserves the right to substitute any fittings, finishes and appliances with other fittings, finishes and appliances in accordance with the provisions of the agreement for sale and purchase.

附註：賣方保留權利按買賣合約條款以其他裝置、裝修物料及設備代替任何裝置、裝修物料及設備。

Notice 8 告示 8

There will be angle valve and flexible tube for the water closet in the actual unit. Such valve and tube have not been installed in this show flat.

實際單位之坐廁有曲尺閥及撓性喉管。該等曲尺閥及喉管在此示範單位內並無安裝。

O A S I S
K A I T A K

Notice 9 告示 9

This (remark: refers to the area outside the external wall or balustrade) is the void area and does not form part of the residential property of the Development.

此處（註：指外牆或圍欄外之範圍）為中空地方及並不構成發展項目的住宅物業一部分。

O A S I S
K A I T A K